



TRIANO L

LED High Bay Fitting

Series 3403...

Applications:

Production areas and warehouses, maintenance and assembly shops, cool storage facilities, walkways in rack areas, hardware stores etc.

Design:

LED-segments: Robust four-part cast aluminium housing with cooling fins, LED-modules and flat safety glasses (IK09), versions (B, TB or T) with PC cover with integrated optics.

ECG-housing: Extruded aluminium with cooling fins. All case parts powder coated

in DB702N (mica-iron paint, grey).

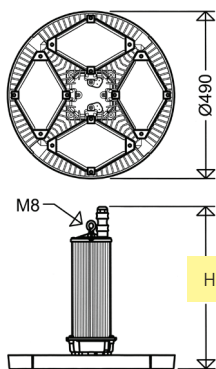
Light distribution: Without optics wide beam, with optics wide (B) narrow-wide (TB) or narrow-beam (T).

Connection: Preinstalled 3-pole (DIMD 5-pole) plug-type connector (**Fast-Connect**), plug mounted to the housing, socket included.

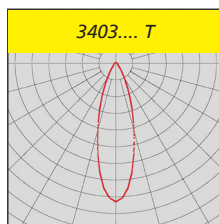
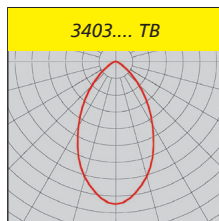
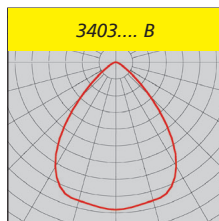
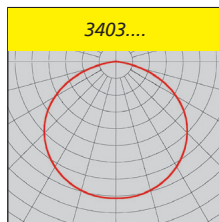
Mounting: 1-point suspension, eyelet included.

Delivery status:

2 parts: LED-segments and ECG-housing



Series	H [mm]
3403 ...	510
3403 L380.. DIMD	590



Technical Data:

LED module: 5,000K, CRI > 80, lifetime L₈₀ > 100,000h at 25°C ambient temperature, lifetime L₇₀ > 70,000h at max. ambient temperature (see notes).

ECG: 220-240V, 50-60Hz, Surge voltage resistance 4kV, overload and short circuit protection.

Note: Due to the inrush current of the electronic ballasts, the maximum permissible number of light fittings per circuit breaker is limited.

Ambient temperature: -20°C up to see article tables

Options:

On request also available with the following configurations (please mention in your enquiry or order):

Output reduction:

With control phase (LR): via 230V control input. Control phase (LST) required. Switching via control phase (LST = 230V: 100%; LST = 0V: 50%). Further dimming levels possible.

Corridor Mode (DIMC)

DALI interface (DIMD)

Constant luminous flux function (CL): Luminous flux is kept on a constant level over the entire lifetime of the LED-modules.

Further Options:

- 4.000K, light-colour 840
- for connection to group or central battery systems (ZB) or emergency mains respectively
- PC cover for application in food industry areas (IFS Food)

- ▽-sign for locations with increased fire risk (D)
- silicone free
- for high ambient temperatures to +70°C (H70)



Product highlights:

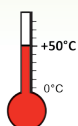
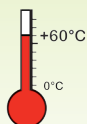
- fast mounting and commissioning due to 1-point suspension and FastConnect quick-connector
- high quality ECG with overload and short circuit protection
- optimized thermal management due to segmentation of the LED modules and direct mounting to the housing. Huge heat sink, excellent heat dissipation, excellent convection
- high system lifetime of up to 100,000h (25°C), >70,000h at maximum ambient temperature
- colour reproduction Ra > 80, according to the workplace guide lines suitable for nearly all plant locations
- uniform illumination due to the „Multi-Layer Technology“ i.e. every individual LED illuminates the whole surface, the light curves of the individual LEDs are overlapping.

Properties, limitations and details for controlling LED-light fittings:

See "Technical Supplement"

All technical data is relevant at the time of print. Actual technical data can be found in the internet under www.schuch.de.

Versions with PC-Optics are suitable for use in IFS-applications!



Article no.	Type	Quantity of ECG	Dimmable	Wide beam	Narrow wide beam	Narrow beam	Tmax [°C]	Energy efficiency class	Weight [kg] (without packing material)	Power consumption [W] **	Luminous flux [lm] **	Light output [lm/W]	Substitute for *
-------------	------	-----------------	----------	-----------	------------------	-------------	-----------	-------------------------	--	--------------------------	-----------------------	---------------------	------------------

3403...



34030 0001	3403 L260	2	•				60	A++	8,9
34030 0003	3403 L260B	2	•				60	A++	8,9
34030 0004	3403 L260TB	2		•			60	A++	8,9
34030 0008	3403 L260T	2			•		60	A++	8,9
34030 0200	3403 L260 DIMD	2	•	•			60	A++	8,9
34030 0202	3403 L260B DIMD	2	•	•			60	A++	8,9
34030 0203	3403 L260TB DIMD	2	•		•		60	A++	8,9
34030 0206	3403 L260T DIMD	2	•		•		60	A++	8,9

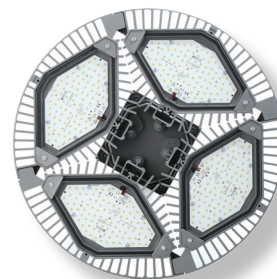
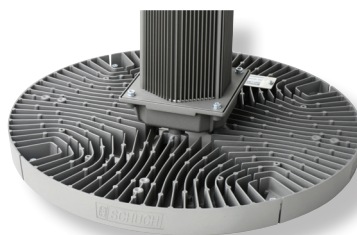
166	27.000	163	HIT400 HIE400 (HS-VG)
-----	--------	-----	--------------------------

34030 0002	3403 L380	2	•				50	A++	8,9
34030 0005	3403 L380B	2	•				50	A++	8,9
34030 0006	3403 L380TB	2		•			50	A++	8,9
34030 0009	3403 L380T	2			•		50	A++	8,9
34030 0201	3403 L380 DIMD	2	•	•			50	A++	9,7
34030 0204	3403 L380B DIMD	2	•	•			50	A++	9,7
34030 0205	3403 L380TB DIMD	2	•		•		50	A++	9,7
34030 0207	3403 L380T DIMD	2	•		•		50	A++	9,7

256	39.500	154	HME700 HPI400
-----	--------	-----	------------------

* see notes

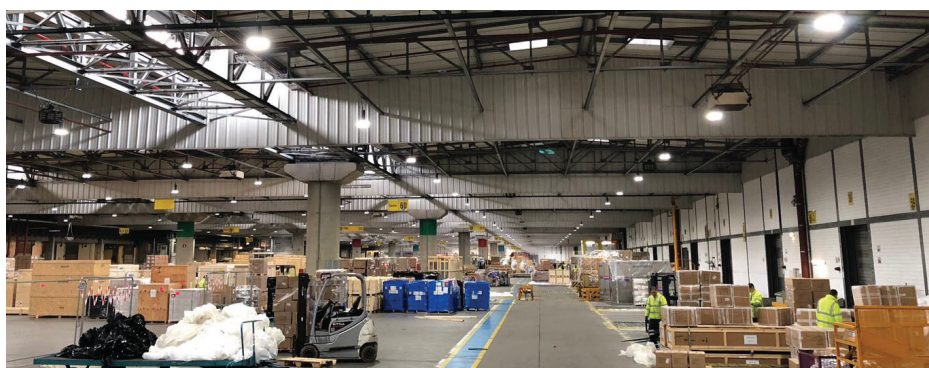
** The given information is for rough orientation only. In each individual case a lighting calculation is necessary. (VG = ballast)



Excellent Thermo-Management by unique Design!

Each LED-Segment is completely surrounded by a high efficient cooling fin block. Such design creates a permanent air flow within the LED-Segments. It cools perfectly and avoids dust sitting on it that could destroy the thermo-management.

Outcome: Operation in high ambient environment plus long life cycle.



High Bay
Fittings

Accessories / Spare Parts

Article no.	Type	
34011 9001	3401/010	spare safety glass, for 1 LED-module
34011 9003	3401/011	PMMA spare cover , prismatic structure for 1 LED-module
34011 9002	3401/010 IFS	PC cover without optics for 1 LED-module for versions IFS
34011 9004	3401/012 B	PC spare cover with wide beam optik for 1 LED-module, version B
34011 9005	3401/012 TB	PC spare cover with narrow-wide beam optics for 1 LED-module, version TB
34011 9006	3401/012 T	PC spare cover with narrow beam optics for 1 LED-module, version T